

The Wharf

WATERSIDE VILLAGE



LOUGHBOROUGH



A TRULY UNIQUE

Waterside Living
EXPERIENCE





*A Place to
Live, Work + Play*



The Wharf Development

The Wharf marks the final build of 3 luxury developments and the last purchase opportunity to live in the heart of Loughborough's new & exclusive Waterside Village.

Canal living is set to take centre stage at Waterside Village - home to a prestigious collection of residential developments comprising of The Mill, The Gate & the Wharf

The Wharf offers the same quality of lifestyle interiors as The Mill & The Gate including exposed brickwork and high ceilings, sitting perfectly alongside the new, modern features inside the 55, high-quality, 1 and 2 bed apartments, which all come with a 10-year LABC warranty and new 250 year lease.

Residents can enjoy waterside living at its best, with free access to The Wharfs gymnasium, fitness studio, communal office space, roof top terrace and concierge service. Each apartment comes with allocated parking space(s) and The Wharf offers easy access to Loughborough's town centre and train station.

As well as the superb living spaces, The Wharf offers residents a truly relaxing waterside lifestyle. Private canalside garden areas provide opportunities for communal gatherings, such as barbecues, or to sit, chat, unwind and watch the world go by.

Residents also benefit from direct access to canal moorings, making Waterside Village a truly unique place to call home.



The Wharf Lifestyle

As part of The Waterside Village, life at The Wharf offers superb health and fitness facilities, as well as, excellent co-working space & private rooftop gardens for residents to live, work and play.

Gym + Fitness studios

Located on the ground floor, all residents have free access to their own fitness studio in addition to a fully-equipped gym facility, using the very latest Technogym equipment to cater for all levels of fitness.





Rooftop Garden

The Wharf boasts its very own private roof top garden where residents can enjoy alfresco style dining in one of the private seating cubes, year round use of the feature igglou domes or simply sit back and watch the world go by on one of the lawned areas.

As daylight turns to evening the rooftop garden will provide a truly unique experience where residents can pop open a bottle and unwind under the stars in the open air bar area, featuring a large TV screen - perfect for movie nights and sports events.



Co-working Space

The communal workspace offers a quiet spot to focus, with a mix of individual and shared desk space within the co-working areas and a separate dedicated office space for more private use should group meetings or corporate hire be required. Residents also have free access to shared kitchen facilities.

Work hard, but first, coffee!

Concierge Service

On hand with a personal touch. Helping residents with all their everyday requirements.

Collecting deliveries, ensuring the building and grounds are immaculate, and monitoring security for everyone's comfort and reassurance.



Stylish 1 and 2 Bed Apartments

Designed with a cool simplicity and bursting with character, each apartment features an eclectic mix of carefully curated textures, materials and finishes. Exposed brickwork walls, and tall ceilings pay homage to the area's industrial past.

This has been combined with bespoke kitchen design and high quality finishes throughout. Each apartment also has its own balcony and allocated parking space(s).

Interior Design

All communal areas are specially designed by award winning interior designers to the same high standards found in The Mill & The Gate.



High Quality Finishes

INTERNAL DOORS / WINDOWS

Bespoke panelled timber doors throughout.
High-quality brushed chrome ironmongery.

EXTERNAL DOORS / WINDOWS

Aluminium French doors to balconies /
Aluminium windows

LIGHTING & ELECTRICAL

Feature track lighting to kitchen areas.
LED downlights to kitchen units.
LED downlights to entrance hall and
bathrooms.
Sockets and lighting switch plates
finished in chrome.
Data and TV points in all living rooms and
bedrooms.
All apartments wired for SKY Q
Ultra-fast fibre internet to all apartments.

RESIDENTS' AMENITIES

Daily concierge service on-hand for all
residents.
Residents have free access to:

- Resident's gym and fitness studio.
- Resident's roof top garden.
- Hot-desk office co-working space.
- Communal canalside garden, courtyard
garden and canal boat moorings.

KITCHEN SPECIFICATION

Bespoke charcoal grey designer
kitchen & wall units with grey stone
quartz worktop.
Inset sink with double lever mixer tap.
Ceramic tiled splash back.
Bosch electric oven(s).
Bosch induction hob
Integrated fridge/freezer
Integrated dishwasher
Integrated washer/dryer

HEATING AND COOLING

Anthracite electric designer column
radiators, with bluetooth and app control.
High efficiency hot water cylinder.

SECURITY

CCTV monitoring to all external areas,
gym, office and roof top garden.
Access control to all building entrances.

FLOORS

Luxury vinyl wood-effect flooring to
hallway, living room, kitchen and
bedrooms.
Ceramic tiling to all bathrooms.





Bathrooms

BATHROOM AND EN-SUITE
Ceramic designer floor tiles.
White ceramic tiles to wall & shower areas.
White enamel basin with wall-hung vanity unit.
Brushed Black mixer taps.

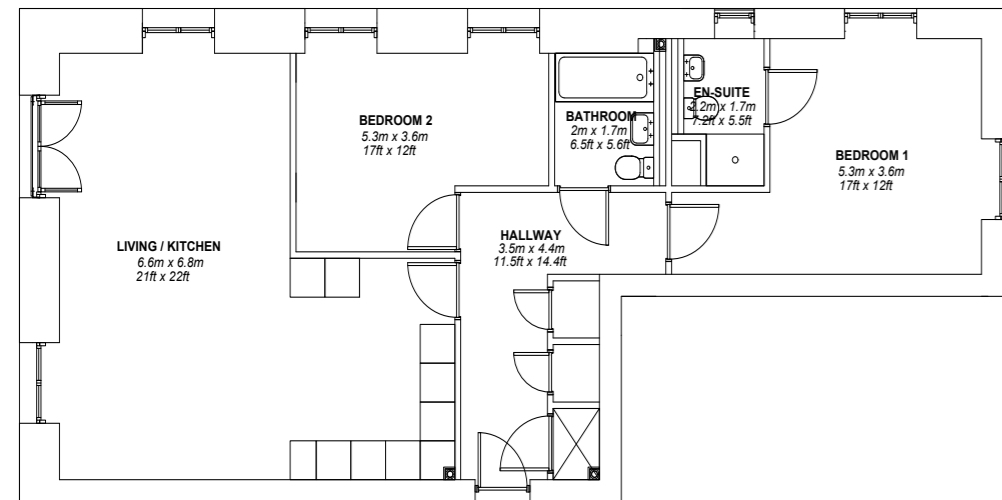
Brushed black wall-mounted shower.
Close coupled WC with soft-close seat and dual-flush plate.
White acrylic top mounted bath.
Anthracite towel rail with heated wall panel.
Anthracite frameless shower door.

Apartment Type 1

Area 943sqft | 2 Bedroom, 2 Bathrooms

Open plan living/kitchen area | Juliette balcony | Exposed brickwork walls

Feature high ceilings | Allocated Parking space(s)



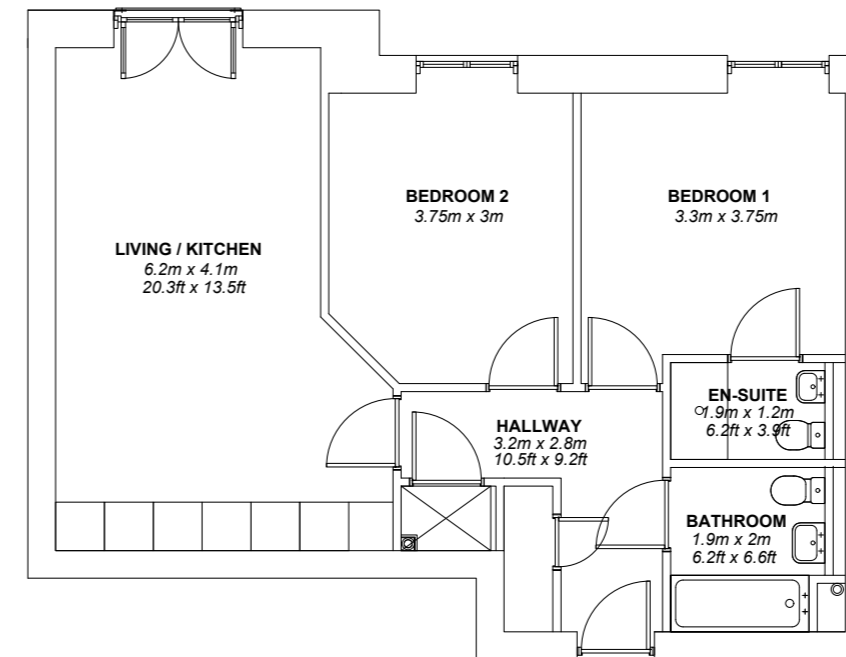
APARTMENT TYPE 1
943 sqft
87.6 m²

Apartment Type 2

Area 674sqft | 2 Bedrooms, 2 Bathrooms

Open plan living/kitchen area | Juliette balcony | Exposed brickwork walls

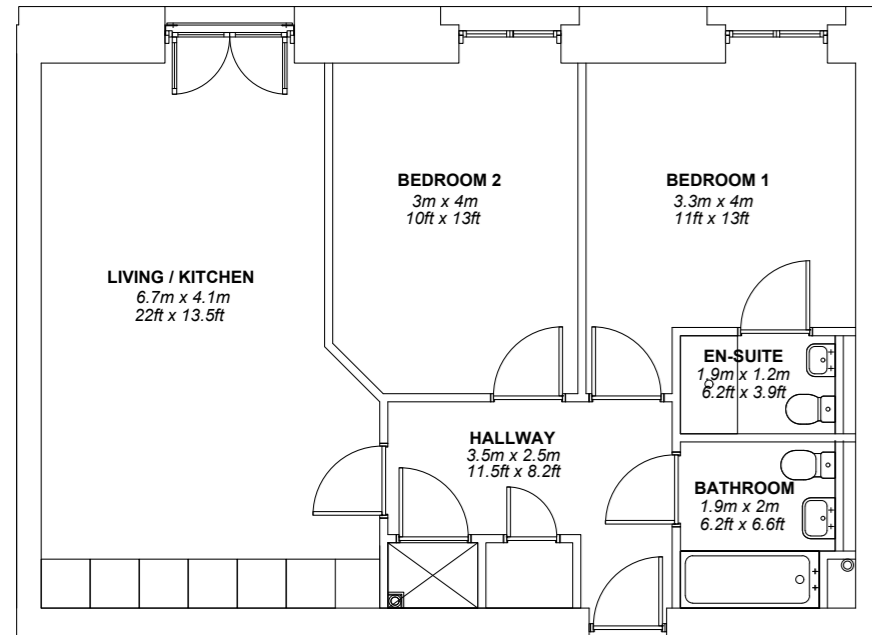
Feature high ceilings | Allocated Parking space(s)



APARTMENT TYPE 2
674 sqft
62.6 m²

Apartment Type 3

Area 732sqft | 2 Bedrooms, 2 Bathrooms
Open plan living/kitchen area | Juliette balcony | Exposed brickwork walls
Feature high ceilings | Allocated Parking space(s)

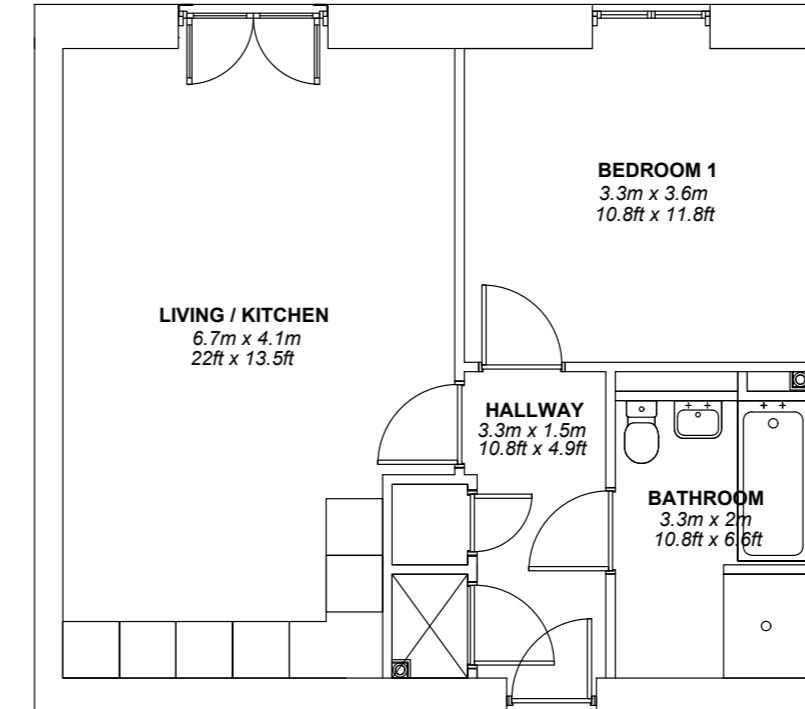


APARTMENT TYPE 3
732 sqft
68 m²



Apartment Type 4

Area 579sqft | 1 Bedrooms, 1 Bathroom
Open plan living/kitchen area | Juliette balcony | Exposed brickwork walls
Feature high ceilings | Allocated Parking space

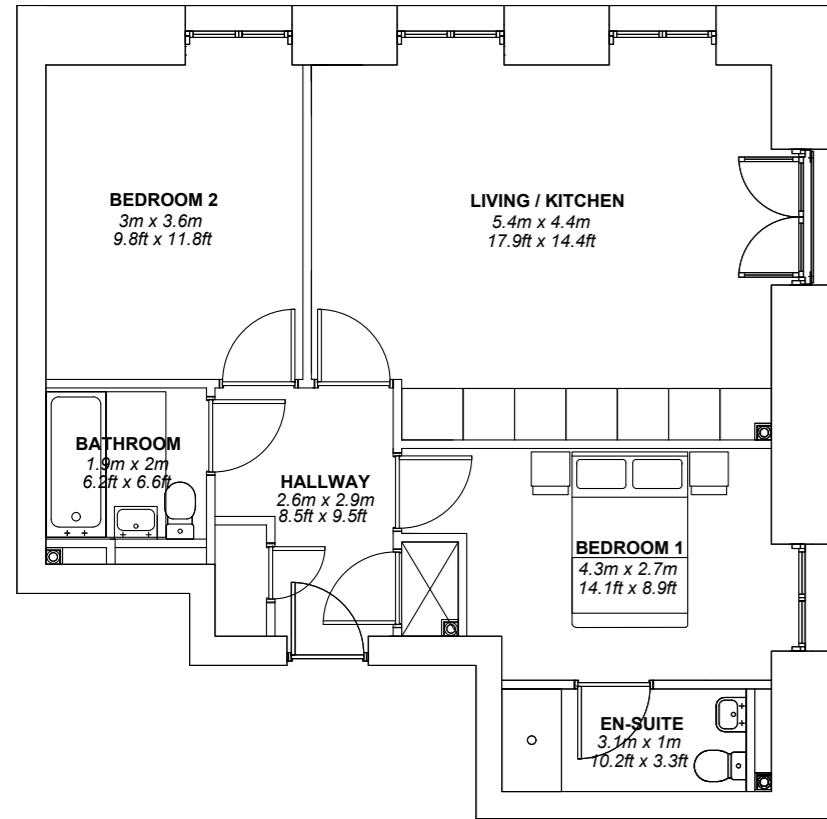


APARTMENT TYPE 4
579 sqft
53.8 m²



Apartment Type 5

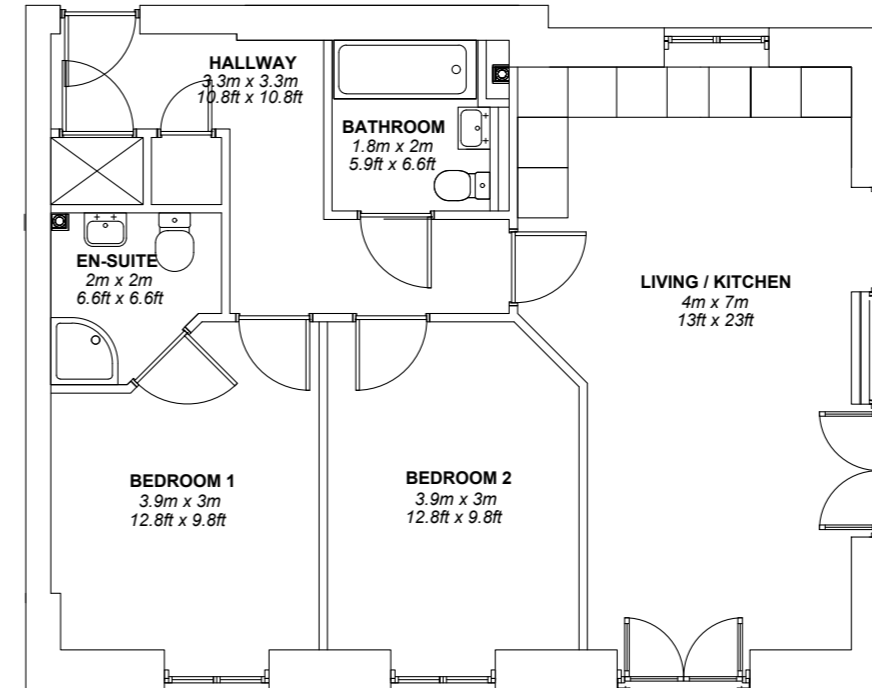
Area 676sqft | 2 Bedrooms, 2 Bathrooms
Open plan living/kitchen area | Juliette balcony | Exposed brickwork walls
Feature high ceilings | Allocated Parking space



APARTMENT TYPE 5
676 sqft
62.8 m²

Apartment Type 6

Area 760sqft | 2 Bedrooms, 2 Bathrooms
Open plan living/kitchen area | 2no. Juliette balconies | Exposed brickwork walls
Feature high ceilings | Allocated Parking space(s)



APARTMENT TYPE 6
760 sqft
70.6 m²



Waterside Village

Loughborough

The market town of Loughborough is situated in the heart of central England. As well as having easy access to the beautiful surrounding countryside, such as Charnwood Forest, it is also well connected to many other places, including Leicester, Nottingham and Derby. Loughborough's close proximity to the M1 opens up additional destinations and international travel is also well catered for, with East Midlands Airport only 15 minutes away.

Loughborough's bustling town centre provides residents with a fantastic range of facilities within walking distance, including shops, restaurants, bars and cinema.



		
Loughborough	5mins	Leicester railway station 10 mins
Leicester city centre	22 mins	Nottingham station 9 mins
Nottingham city centre	29 mins	Derby railway station 22 mins
Derby city centre	29 mins	Birmingham new street 1hr 11mins
East Midlands airport	17 mins	London St Pancras International 1hr 20mins
Birmingham	1hr 3 mins	Manchester Piccadilly 2hr 17mins
Manchester	2hr 20 mins	
London	3hr 5 mins	



The Village

The Wharf is one of three residential developments to sit within Waterside Village, alongside the recently completed Mill & The Gate.

A vibrant, dynamic lifestyle awaits at this unique collection of three exclusive developments, designed to become the new gateway hub into Loughborough.

Waterside Village offers residents a true touch of luxury with each individual building boasting its own bespoke designed interiors and leisure facilities throughout.

Completing the trio of developments, The Wharf is set to finish in style with its stunning roof top garden, fitness studio, gymnasium, co-working hub & concierge facilities.

All Waterside village residents will enjoy access to their own communal urban play area and Canalside gardens where residents can also benefit from direct access to canal moorings.

Ideally located, the train station & town centre facilities are all within easy walking distance, making it the perfect place to set up home and enjoy life to the fullest.

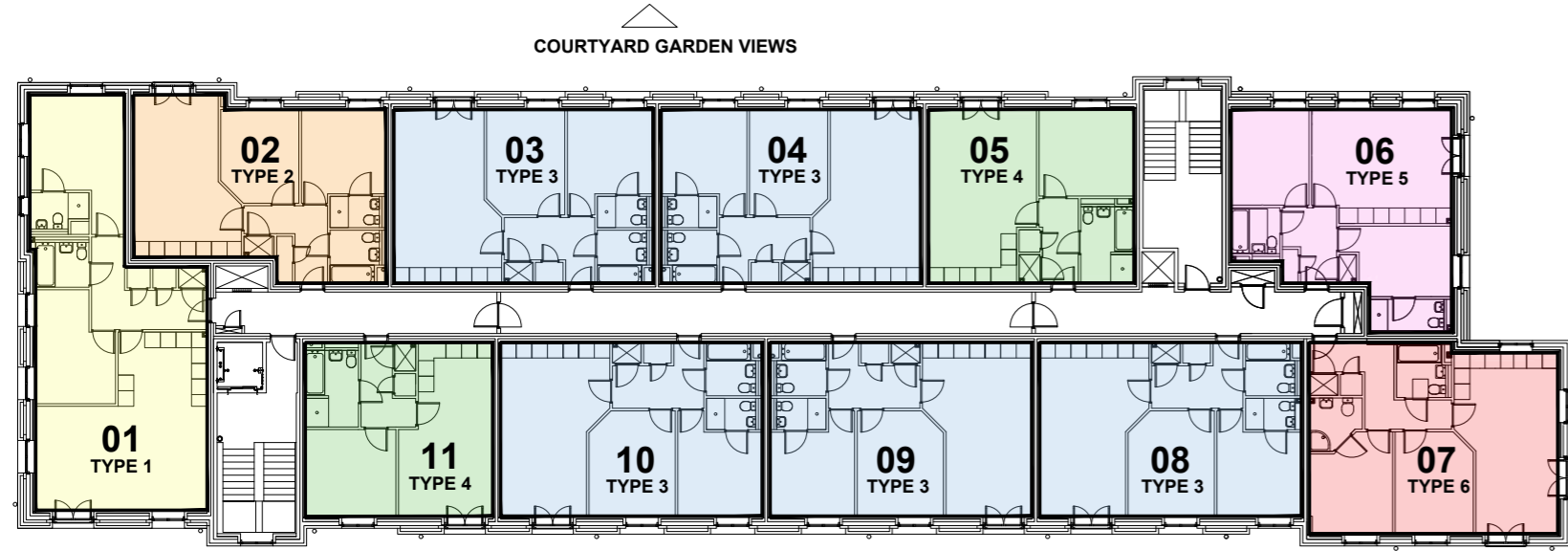
A PRESTIGIOUS COLLECTION OF

*55 luxury
1+2 bed apartments*

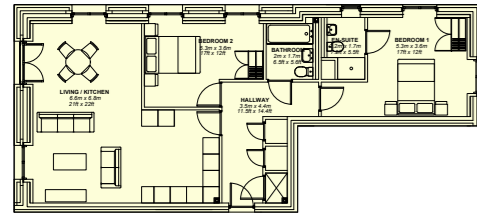
WATERSIDE LIVING | RESIDENT'S GYM,
FITNESS STUDIO, ROOF TOP GARDENS,
CO-WORKING SPACE & PARKING



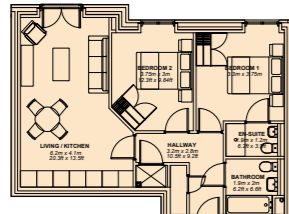
First Floor - Apartment types



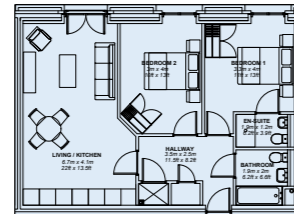
1st FLOOR



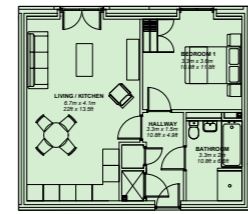
APARTMENT TYPE 1
942.93 sqft
87.6 m2



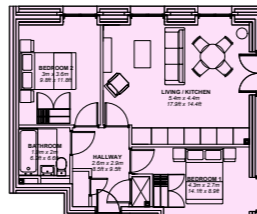
APARTMENT TYPE 2
674.04 sqft
62.62 m2



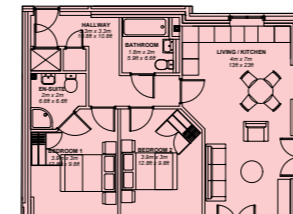
APARTMENT TYPE 3
731.84 sqft
67.99 m2



APARTMENT TYPE 4
579.10 sqft
53.8 m2

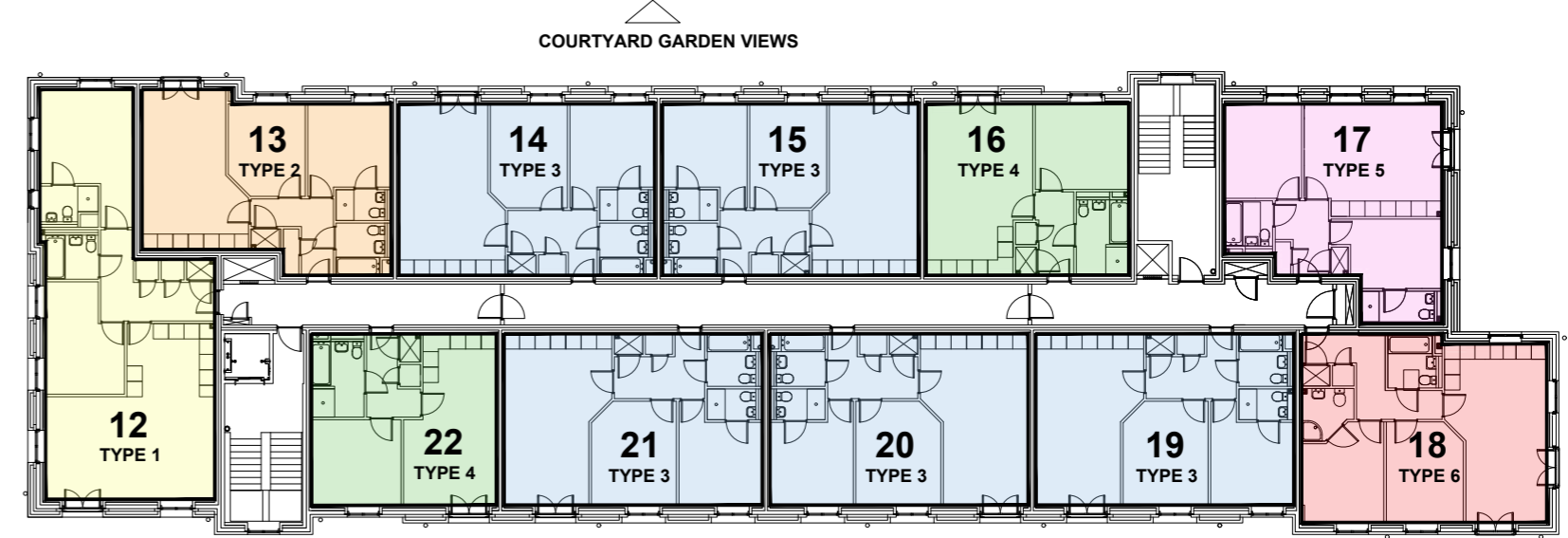


APARTMENT TYPE 5
676.30 sqft
62.83 m2

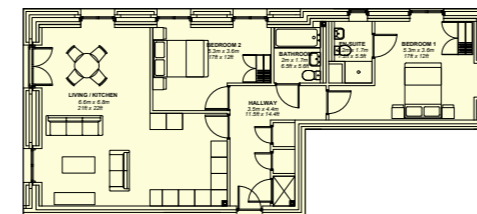


APARTMENT TYPE 6
759.94 sqft
70.60 m2

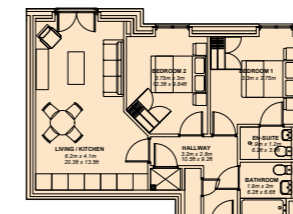
Second Floor - Apartment types



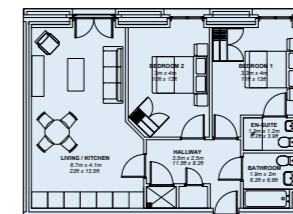
2nd FLOOR



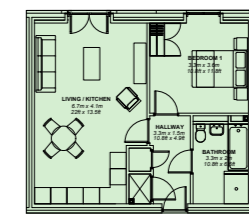
APARTMENT TYPE 1
942.93 sqft
87.6 m2



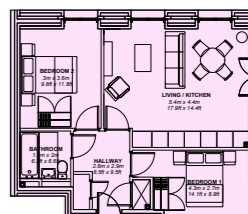
APARTMENT TYPE 2
674.04 sqft
62.62 m2



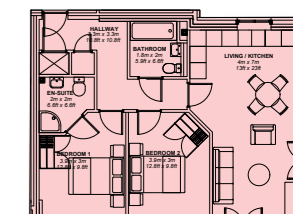
APARTMENT TYPE 3
731.84 sqft
67.99 m2



APARTMENT TYPE 4
579.10 sqft
53.8 m2

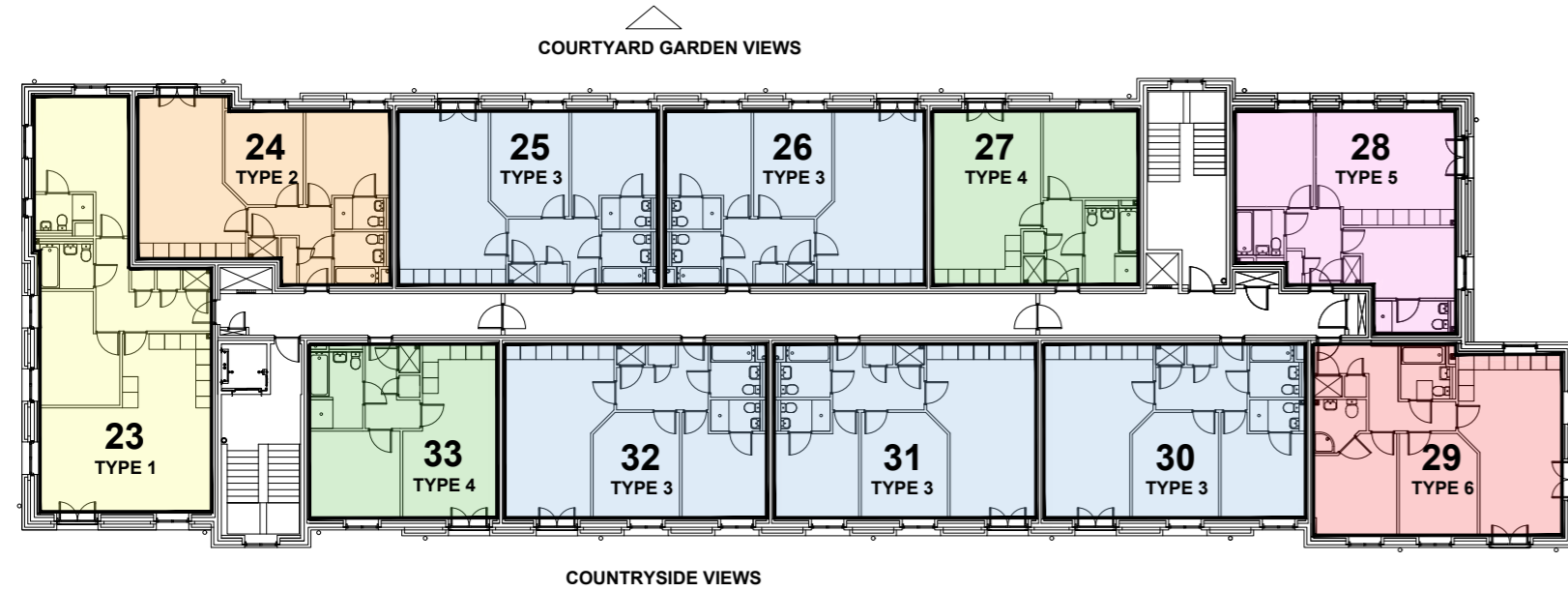


APARTMENT TYPE 5
676.30 sqft
62.83 m2



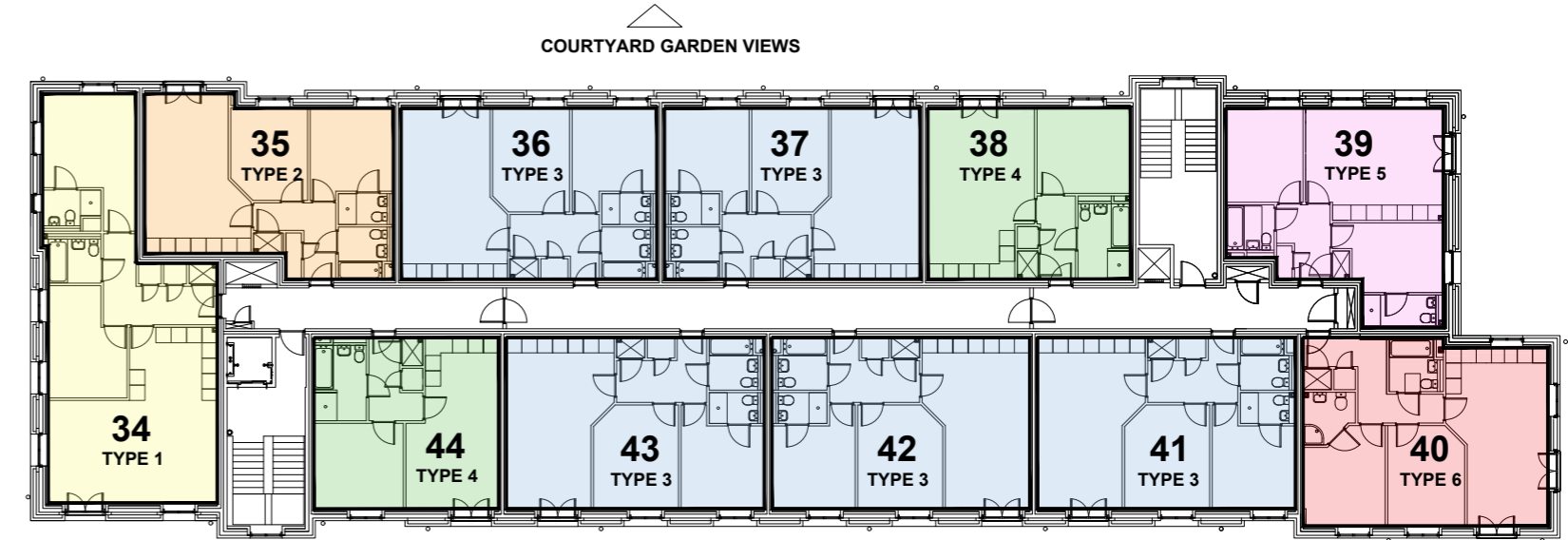
APARTMENT TYPE 6
759.94 sqft
70.60 m2

Third Floor - Apartment types

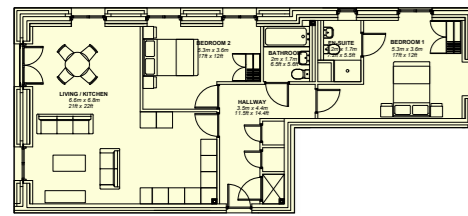


3rd FLOOR

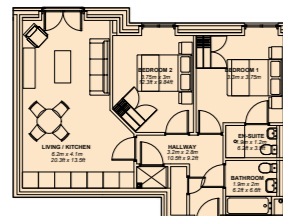
Fourth Floor - Apartment types



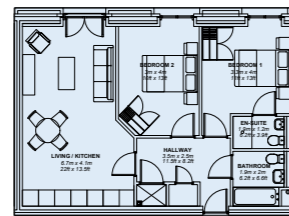
4th FLOOR



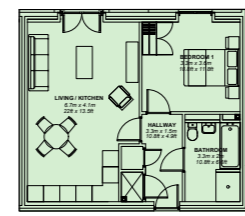
APARTMENT TYPE 1
942.93 sqft
87.6 m²



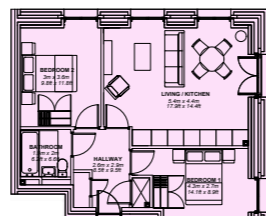
APARTMENT TYPE 2
674.04 sqft
62.62 m²



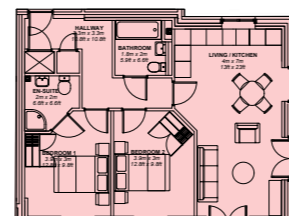
APARTMENT TYPE 3
731.84 sqft
67.99 m²



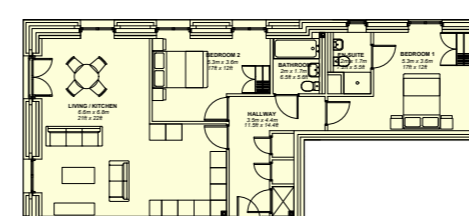
APARTMENT TYPE 4
579.10 sqft
53.8 m²



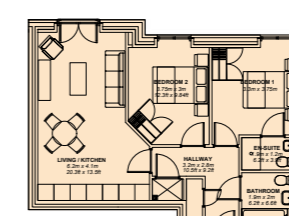
APARTMENT TYPE 5
676.30 sqft
62.83 m²



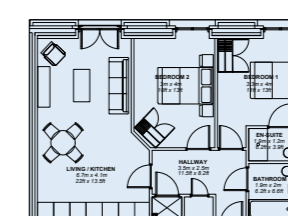
APARTMENT TYPE 6
759.94 sqft
70.60 m²



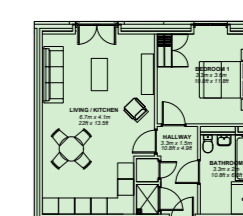
APARTMENT TYPE 1
942.93 sqft
87.6 m²



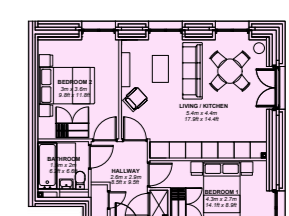
APARTMENT TYPE 2
674.04 sqft
62.62 m²



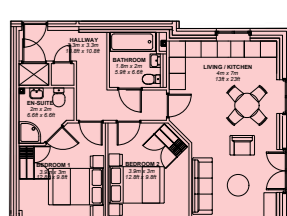
APARTMENT TYPE 3
731.84 sqft
67.99 m²



APARTMENT TYPE 4
579.10 sqft
53.8 m²

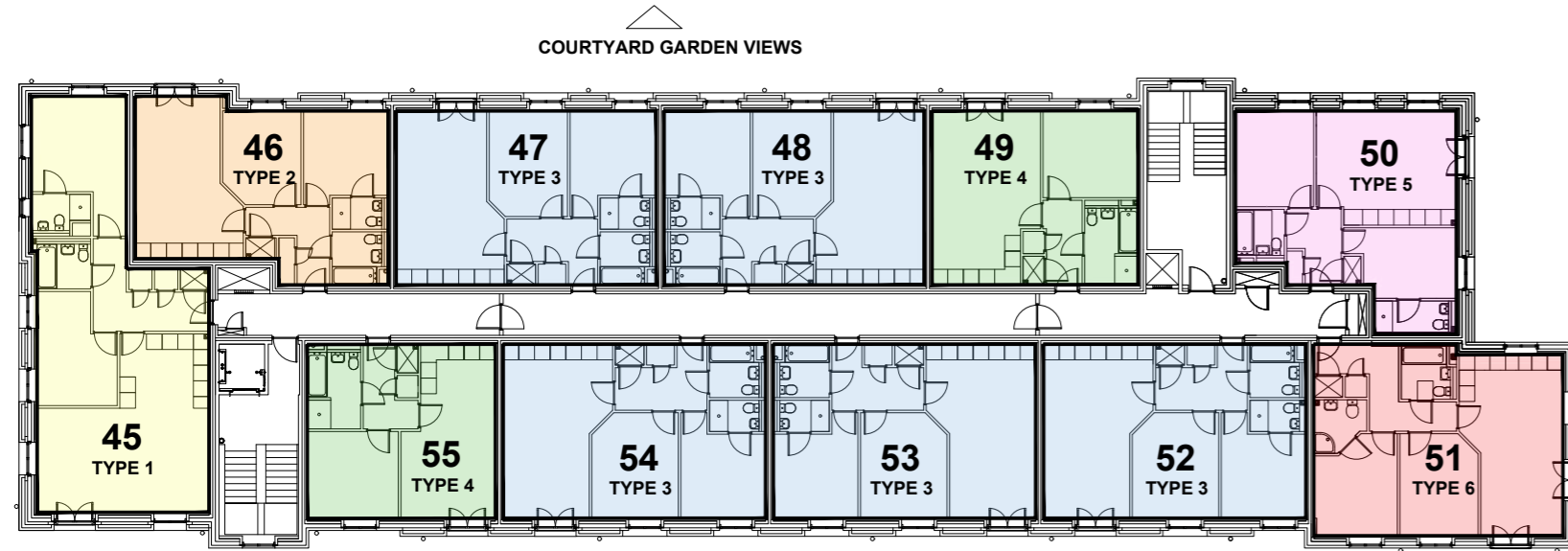


APARTMENT TYPE 5
676.30 sqft
62.83 m²

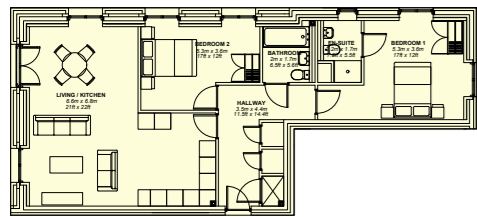


APARTMENT TYPE 6
759.94 sqft
70.60 m²

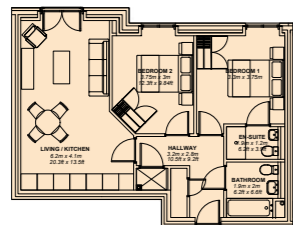
Fifth Floor - Apartment types



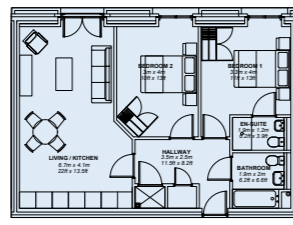
5th FLOOR



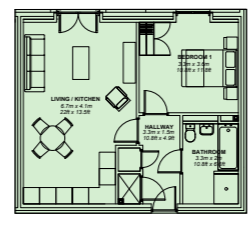
APARTMENT TYPE 1
942.93 sqft
87.6 m2



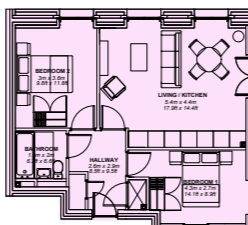
APARTMENT TYPE 2
674.04 sqft
62.62 m2



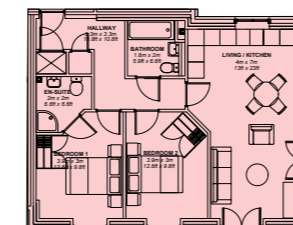
APARTMENT TYPE 3
731.84 sqft
67.99 m2



APARTMENT TYPE 4
579.10 sqft
53.8 m2



APARTMENT TYPE 5
676.30 sqft
62.83 m2



APARTMENT TYPE 6
759.94 sqft
70.60 m2

NB

ENQUIRE NOW

01509 323232

sales@nbestateagents.com



COPYRIGHT SOLUS HOMES LTD

The information contained with this document is a general guide. This information does not constitute a offer or a contract and we (or anyone in our company) do not imply, make or give any representation, guarantee or warranty whatsoever relating to the terms contained herein. Any intending investor must satisfy themselves as to the correctness of any of the statements, plans or images contained herein. Images are for reference purposes only.